

Profile

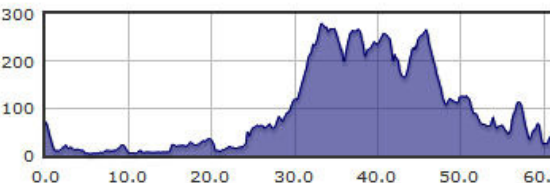
1



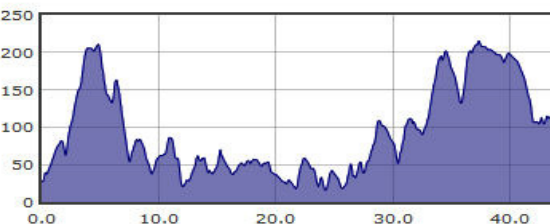
2



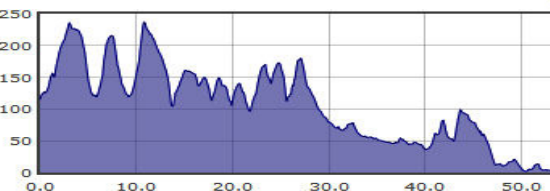
3



4



5



Route Key

Place Names in **UPPER CASE** are entered
(Road Number) Major Road ahead
Tlts Traffic Light controlled road junction
T Give way at road junction ahead **@** roundabout
X Give way at crossroad junction ahead **###** cattle grid
L Turn left **R** Turn right **SO** straight on



hard boiled 300 2018

66km (A^A11m/km)

POOLE - AMESBURY

02:00 Depart **Poole Train Station**.

At T, R joining one-way to @
 1st Exit(B3093) to @ where SO
 At Tlts & @s A349 follow signs to
 Take 'all directions' signs(B3078)

In 5km fork L sp *Martin*

At T, R

Next L sp *Rockborne*

At T, L

At T(A354) R sp *Salisbury*

Pass *The Fox & Goose* and L sp

R(Xrds) sp

At T, L to Tlts(A36), L

At @, R sp *Devizes*

At mini @ SO to X(A360), SO

At T, L sp

Continue to T, R to cross river into

Control at ***The Wyndam Hall*** on R

Opens 04:12 - Closes 06:24(66Km)

WIMBORNE

CRANBORNE

DAMERHAM

ROCKBOURNE

COOMBE BISSETT

Racecourse

Racecourse

WILTON

WOODFORDS

AMESBURY

Overall total to climb: 4400metres
Audax Altitude Award points: 4.5

444km (A^A22)**AXMINSTER - CATTISTOCK**

Return through town and L (Sector Lane)

R sp *Axminster & Crewkerne.*At X(B3165), SO (*info*)

At X, L

At T, R **WOOTTON FITZPAINE**At T, L sp **WHITECHURCH**
CANONICORUMAt X, L sp *Shave Cross*L opposite *The Five Bells Pub* sp **SHAVE CROSS**At T, R **DOTTERY**

At X(B3162), SO

At staggered X(A3066), R & L

R sp **BRADPOLE**
LODERSL (*info*) sp *Powerstock*

At T, R

L sp **NETTLECOMBE**R sp **POWERSTOCK**At *Mount Pleasant Xrds*, L&R **HIGHER KINGCOMBE**

At X, SO

At X(A356), R sp *Dorchester*In 2km L, sp **CHILFROME**At T, L sp **CATTISTOCK**Pass *Fox & Hounds*, through *Square* & L into Mill StControl in **Cattistock Tearooms** at rear of of village store

Opens 12:00(25kph) Closes 19:20m (260km)

553km (A^A15)**CATTISTOCK - POOLE**Continue over rise and R (*Sandhills Cross*)At X(A37) R&L sp *Sydling St Nicholas**With care !!!FORD!!!*At X(A352), SO. **CERNE ABBAS**R (*Piddle Lane*)At X, SO **PIDDLETRENTHIDE**At T(B3143) L&R sp *CH-B-NE* **CHESELBOURNE**At T, L&R (*Streetway Lane*)

At T, R and next L.

At T, R and next L sp *Milton Abbas*At T, L (*Info*) **MILTON ABBAS**At T, R sp **WINTERBORNE****WHITECHURCH**At X(A354), SO **WINTERBORNE****KINGSTON**At T, R and 2nd L (*Duck Lane*) **ANDERSON**At X(A31) *Red Post* LAfter *Worlds End Inn* R(B3075)Next L sp **LYTCHETT MATRAVERS**

At T, R

At T(B3067) L

At double Mini @'s, R B3068 sp

UPTON
HAMWORTHYAt *Lidl* Tlts, SOAt *Chip-shop* Tlts, SOAt *School* Tlts, SOAt next Tlts, L(*Rigler Road*) to

In one way system join RH lane sp

Stay in lane into *Marston Road**The Twin Sails Bridge*
*Town Centre*Control by Tlts on Right at **The Queen Mary Inn**

Opens 14:24(25kph) Closes(BRM) 22:00(313km)

2

89km (A^A11.5)

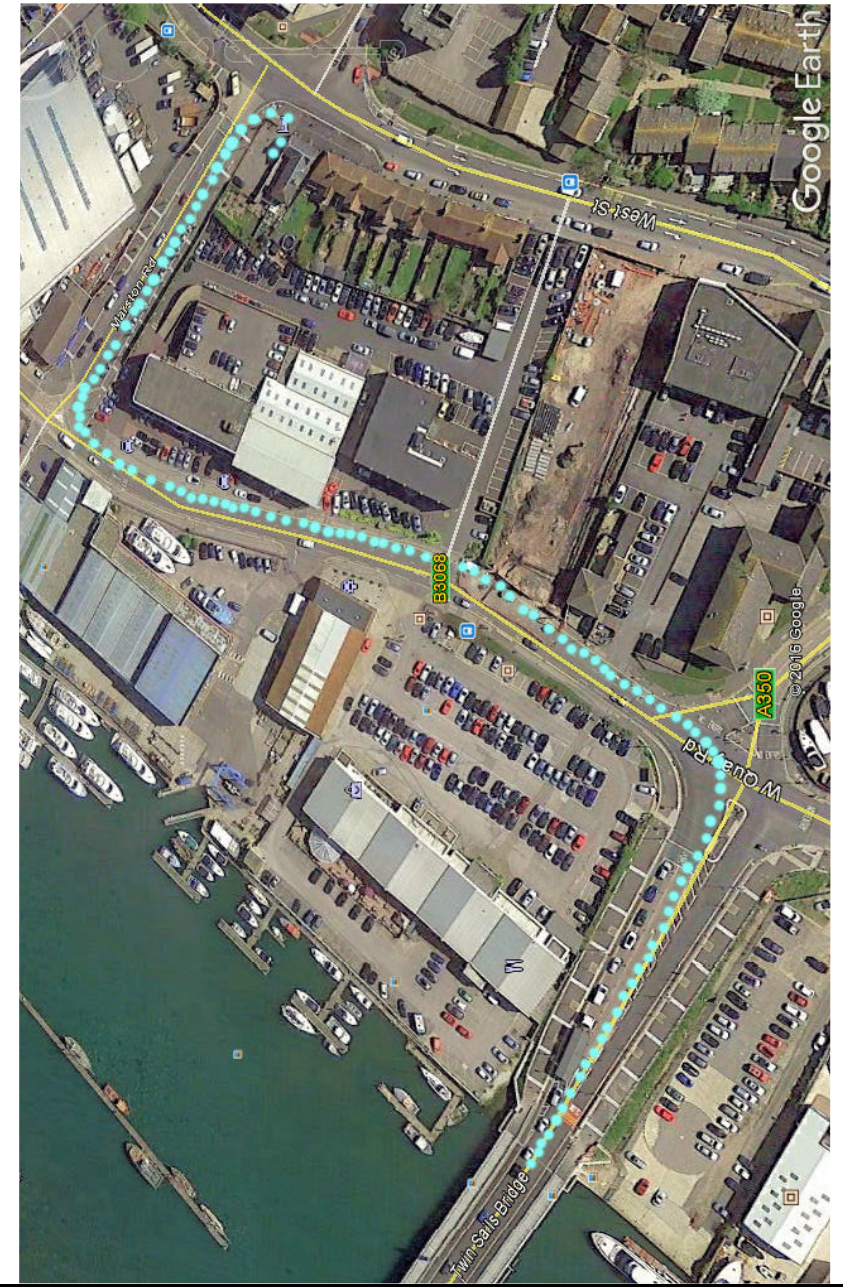
AMESBURY - ASHCOTT

Continue to Tlts, L(A345)
 At @(A303) SO to @, L sp *Larkhill*
 At @ (A360), R
 L(B390) sp
 At T(A36), R
 At @ 3rd exit B3095 sp
 At X, SO to T where L sp
 At X(A350) SO sp
 At X(B3092) SO sp *Bruton*
 In 7km R(*Xrds*) sp
 At X(A359), SO
 At *Xrds (info)* R sp *Village Hall*
 At T, L to X, SO sp
 At T, R next L (**NOT L&R**) sp
 At T(B3081) R & L (*Leighton Lane*)
 At X(A371) SO sp *Pylle*
 At T(A37) L & R sp *Pylle Church*
 At T, L sp *East Pennard*
 At T, R sp
 2nd L sp *West Bradley*
 At T, R sp *West Bradley*
 L (*X rds*) sp
 At T, L sp *Lydford*
 R sp
 At X, SO
 At T, R to X, SO (*Compton Street*)
 At T, L next R
 At T (**info**), R
 At X(B3151) SO
 At Junction L onto A39

SHREWTON
CHITTERNE
SUTTON VENY
LONGBRIDGE DEVERILL
MAIDEN BRADLEY
UPTON NOBLE
BATCOMBE
WESTCOMBE
STONEY STRATTON
EVERCREECH
EAST PENNARD
PARBROOK
BALTONSBOROUGH
BUTLEIGH
Wickhams Cross
ASHCOTT

Continue to control at **The Albion Inn** at the far end of village
 Opens 07:10am - Closes 12:20(155km)

Notes: Twin Sails Bridge to Queen Mary Inn



Notes

Remember:

Station Café Axminster: Last food orders at 15:00

To maximise the chances of gaining BRM validation be earlier!

Sobering thought: most riders take close to 7 hrs to get back from here.

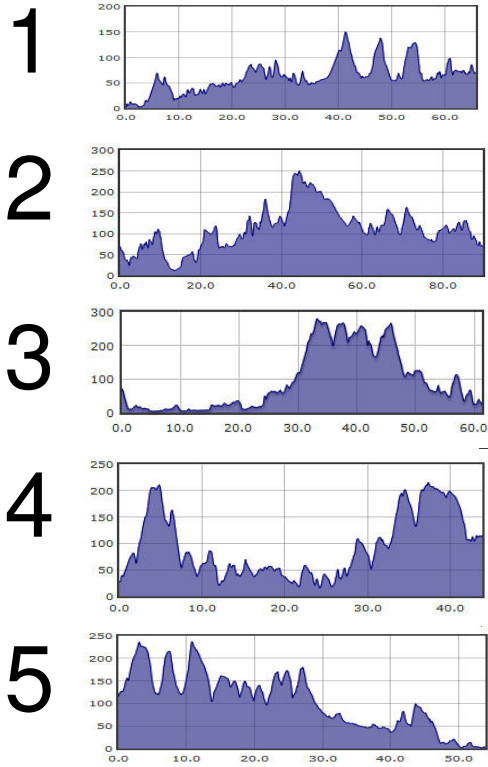
3

61km (A^A14)

ASHCOTT - AXMINSTER

Leave *The Albion & Left* into *Pedwell Lane*
At T(A361), R. Continue to **BURROWBRIDGE**
Over bridge and L sp *Oath*
R sp **ATHELNEY**
At T, R sp **NORTH CURRY**
Through village & after 2km L into *Lillesdon Lane*
At X(A378), SO sp *Meare Green*
At T, L. At **Griffin Chateau**, R **WEST HATCH**
At T, L
Keep L, (*Road markings unclear*)
At T, R sp *Staple Fitzpaine*
Pass *Farmers Arms* and at T, L
At X, SO sp **CURLAND**
At T(Grass▼), R & onto X where L
At T, R then 2nd L (*Hallswell Farm*)
2nd L (Keep R through farmyard) **BIRCHWOOD**
At T(B3170), R & L sp *Otterford Ch*
1st L
At T, R onto T where R sp **CHURCHINGFORD**
At T, L(*Honiton Rd*)
Pass Devon sign and next L
At T, R and at next T, L (*info*)
At T(A303) by *Derelict Garage* L&R
At T(A30) L **YARCOMBE**
R and follow sign posts to **STOCKLAND**
At T, L sp *Axminster*
L sp *cycleroute 52* *Beckford Bridge*
At T, R sp *Tolcis*
At T, R sp *Axminster*
At T, R. Over rail Xing to T where R **AXMINSTER**
At T (*old A35*), R and continue to @
Follow Station signs to control at **Station Café**
Opens 09:12 - Closes 16:24(216km)

Profile



Route Key

Place Names in **UPPER CASE** are entered
(Road Number) Major Road ahead
Tlts Traffic Light controlled road junction
T Give way at road junction ahead @ roundabout
X Give way at crossroad junction ahead ### cattle grid
L Turn left **R** Turn right **SO** straight on



hard boiled 300 2018

66km (A^A11m/km)

POOLE - AMESBURY

02:00 Depart **Poole Train Station**.
 At T, R joining one-way to @
 1st Exit(B3093) to @ where SO
 At Tlts & @s A349 follow signs to
 Take 'all directions' signs(B3078)
 In 5km fork L sp *Martin*
 At T, R
 Next L sp *Rockborne*
 At T, L
 At T(A354) R sp *Salisbury*
 Pass *The Fox & Goose* and L sp
 R(Xrds) sp
 At T, L to Tlts(A36), L
 At @, R sp *Devizes*
 At mini @ SO to X(A360), SO
 At T, L sp
 Continue to T, R to cross river into
 Control at **The Wyndam Hall** on R
 Opens 04:12 - Closes 06:24(66Km)

WIMBORNE
CRANBORNE

DAMERHAM

ROCKBOURNE
COOMBE BISSETT

Racecourse
Racecourse
WILTON

WOODFORDS
AMESBURY

Overall total to climb: 4400metres
Audax Altitude Award points: 4.5

4

44km (A^A22)

AXMINSTER - CATTISTOCK

Return through town and L (Sector Lane)
 R sp *Axminster & Crewkerne*.
 At X(B3165), SO (*info*)
 At X, L
 At T, R **WOOTTON FITZPAINE**
 At T, L sp **WHITECHURCH**
CANONICORUM
 At X, L sp *Shave Cross*
 L opposite *The Five Bells Pub* sp **SHAVE CROSS**
 At T, R **DOTTERY**
 At X(B3162), SO
 At staggered X(A3066), R & L
 R sp **BRADPOLE**
LODERS
 L (*info*) sp *Powerstock*
 At T, R
 L sp **NETTLECOMBE**
 R sp **POWERSTOCK**
 At *Mount Pleasant Xrds*, L&R **HIGHER KINGCOMBE**
 At X, SO
 At X(A356), R sp *Dorchester*
 In 2km L, sp **CHILFROME**
 At T, L sp **CATTISTOCK**
 Pass *Fox & Hounds*, through *Square* & L into Mill St
 Control in **Cattistock Tearooms** at rear of of village store
 Opens 12:00(25kph) Closes 19:20m (260km)

5

53km (A^A15)

CATTISTOCK - POOLE

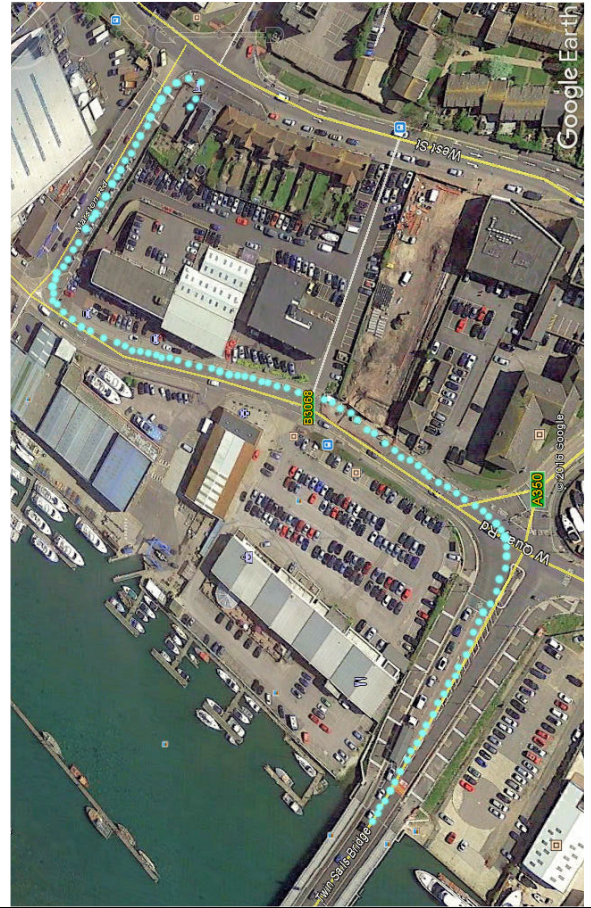
Continue over rise and R (*Sandhills Cross*)
 At X(A37) R&L sp *Sydling St Nicholas*
With care !!!FORD!!!
 At X(A352), SO, **CERNE ABBAS**
 R (*Piddle Lane*)
 At X, SO **PIDDLETRENTSHIDE**
 At T(B3143) L&R sp *CH-B-NE* **CHESELBOURNE**
 At T, L&R (*Streetway Lane*)
 At T, R and next L.
 At T, R and next L sp *Milton Abbas*
 At T, L (*Info*) **MILTON ABBAS**
 At T, R sp **WINTERBORNE**
WHITECHURCH
 At X(A354), SO **WINTERBORNE**
KINGSTON
 At T, R and 2nd L (*Duck Lane*) **ANDERSON**
 At X(A31) *Red Post* L
 After *Worlds End Inn* R(B3075)
 Next L sp **LYTCHETT MATRAVERS**
 At T, R
 At T(B3067) L
 At double Mini @'s, R B3068 sp **UPTON**
 At *Lidl* Tlts, SO **HAMWORTHY**
 At *Chip-shop* Tlts, SO
 At *School* Tlts, SO
 At next Tlts, L(*Rigler Road*) to *The Twin Sails Bridge*
 In one way system join RH lane sp *Town Centre*
 Stay in lane into *Marston Road*
 Control by Tlts on Right at **The Queen Mary Inn**
 Opens 14:24(25kph) Closes(BRM) 22:00(313km)

289km (A^A11.5)**AMESBURY - ASHCOTT**

Continue to Tlts, L(A345)
 At @(A303) SO to @, L sp *Larkhill*
 At @ (A360), R
 L(B390) sp
 At T(A36), R
 At @ 3rd exit B3095 sp
 At X, SO to T where L sp
 At X(A350) SO sp
 At X(B3092) SO sp *Bruton*
 In 7km R(*Xrds*) sp
 At X(A359), SO
 At *Xrds (info)* R sp *Village Hall*
 At T, L to X, SO sp
 At T, R next L (**NOT L&R**) sp
 At T(B3081) R & L (*Leighton Lane*)
 At X(A371) SO sp *Pylle*
 At T(A37) L & R sp *Pylle Church*
 At T, L sp *East Pennard*
 At T, R sp
 2nd L sp *West Bradley*
 At T, R sp *West Bradley*
 L (*X rds*) sp
 At T, L sp *Lydford*
 R sp
 At X, SO
 At T, R to X, SO (*Compton Street*)
 At T, L next R
 At T (*info*), R
 At X(B3151) SO
 At Junction L onto A39

SHREWTON
CHITTERNE
SUTTON VENY
LONGBRIDGE DEVERILL
MAIDEN BRADLEY
UPTON NOBLE
BATCOMBE
WESTCOMBE
STONEY STRATTON
EVERCREECH
EAST PENNARD
PARBROOK
BALTONSBOROUGH
BUTLEIGH
Wickhams Cross
ASHCOTT

Continue to control at **The Albion Inn** at the far end of village
 Opens 07:10am - Closes 12:20(155km)

Notes: Twin Sails Bridge to Queen Mary Inn**Notes****Remember:**

Station Café Axminster: Last food orders at 15:00
 To maximise the chances of gaining BRM validation be earlier!
Sobering thought: most riders take close to 7 hrs to get back from here.

361km (A^A14)**ASHCOTT - AXMINSTER**

Leave *The Albion* & Left into *Pedwell Lane*
 At T(A361), R. Continue to **BURROWBRIDGE**
 Over bridge and L sp *Oath*
 R sp
 At T, R sp
 Through village & after 2km L into **ATHELNEY**
 At X(A378), SO sp *Meare Green* **NORTH CURRY**
 At T, L. At *Griffin Chateau*, R **Lillesdon Lane**
 At T, L **WEST HATCH**
 Keep L, (*Road markings unclear*)
 At T, R sp *Staple Fitzpaine*
 Pass *Farmers Arms* and at T, L
 At X, SO sp **CURLAND**
 At T(Grass▼), R & onto X where L
 At T, R then 2nd L (*Hallswell Farm*)
 2nd L (Keep R through farmyard) **BIRCHWOOD**
 At T(B3170), R & L sp *Otterford Ch*
 1st L
 At T, R onto T where R sp **CHURCHINGFORD**
 At T, L(*Honiton Rd*)
 Pass Devon sign and next L
 At T, R and at next T, L (*info*)
 At T(A303) by *Derelict Garage* L&R
 At T(A30) L
 R and follow sign posts to **YARCOMBE**
 At T, L sp *Axminster* **STOCKLAND**
 L sp *cycleroute 52* **Beckford Bridge**
 At T, R sp *Tolcis*
 At T, R sp *Axminster*
 At T, R. Over rail Xing to T where R
 At T (*old A35*), R and continue to @ **AXMINSTER**
 Follow Station signs to control at **Station Café**
 Opens 09:12 - Closes 16:24(216km)